

# Dell™ Inspiron™ N4010 Service Manual

[Before You Begin](#)

[Battery](#)

[Module Cover](#)

[Memory Module\(s\)](#)

[Optical Drive](#)

[Keyboard](#)

[Palm Rest](#)

[Power Button Board](#)

[Coin-Cell Battery](#)

[Wireless Mini-Card\(s\)](#)

[Internal Card With Bluetooth® Wireless Technology](#)

[Thermal Fan](#)

[System Board](#)

[Hard Drive](#)

[Thermal Cooling Assembly](#)

[Processor Module](#)

[Speakers](#)

[Display](#)

[Camera Module](#)

[Middle Cover](#)

[I/O Board](#)

[Daughter Board](#)

[AC Adapter Connector](#)

[Flashing the BIOS](#)

---

## Notes, Cautions, and Warnings



**NOTE:** A NOTE indicates important information that helps you make better use of your computer.



**CAUTION:** A CAUTION indicates either potential damage to hardware or loss of data and tells you how to avoid the problem.



**WARNING:** A WARNING indicates a potential for property damage, personal injury, or death.

---

Information in this document is subject to change without notice.

© 2010 Dell Inc. All rights reserved.

Reproduction of these materials in any manner whatsoever without the written permission of Dell Inc. is strictly forbidden.

Trademarks used in this text: *Dell*, the *DELL* logo, and *Inspiron* are trademarks of Dell Inc.; *Bluetooth* is a registered trademark owned by Bluetooth SIG, Inc. and is used by Dell under license; *Microsoft*, *Windows*, *Windows Vista*, and the *Windows Vista* start button logo are either trademarks or registered trademarks of Microsoft Corporation in the United States and/or other countries.

Other trademarks and trade names may be used in this document to refer to either the entities claiming the marks and names or their products. Dell Inc. disclaims any proprietary interest in trademarks and trade names other than its own.

Regulatory model P11G series      Regulatory type P11G001

March 2010

Rev. A00

## AC Adapter Connector

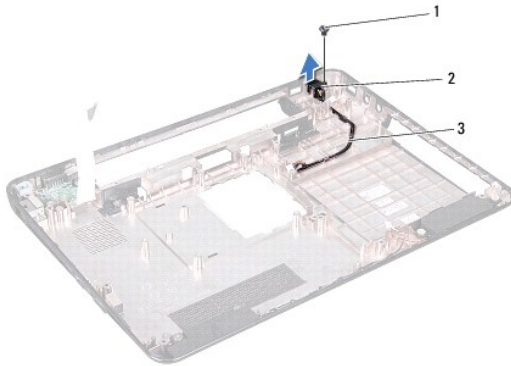
### Dell™ Inspiron™ N4010 Service Manual

- [Removing the AC Adapter Connector](#)
- [Replacing the AC Adapter Connector](#)

- WARNING:** Before working inside your computer, read the safety information that shipped with your computer. For additional safety best practices information, see the Regulatory Compliance Homepage at [www.dell.com/regulatory\\_compliance](http://www.dell.com/regulatory_compliance).
- CAUTION:** Only a certified service technician should perform repairs on your computer. Damage due to servicing that is not authorized by Dell™ is not covered by your warranty.
- CAUTION:** To avoid electrostatic discharge, ground yourself by using a wrist grounding strap or by periodically touching an unpainted metal surface (such as a connector on your computer).
- CAUTION:** To help prevent damage to the system board, remove the main battery (see [Removing the Battery](#)) before working inside the computer.
- 

## Removing the AC Adapter Connector

1. Follow the instructions in [Before You Begin](#).
2. Remove the battery (see [Removing the Battery](#)).
3. Follow the instructions from [step 4](#) to [step 15](#) in [Removing the System Board](#).
4. Remove the display assembly (see [Removing the Display Assembly](#)).
5. Remove the middle cover (see [Removing the Middle Cover](#)).
6. Remove the daughter board (see [Removing the Daughter Board](#)).
7. Remove the screw that secures the AC adapter connector to the computer base.
8. Make a note of the AC adapter connector cable routing and lift the AC adapter connector out of the computer base.




|   |                            |   |                      |
|---|----------------------------|---|----------------------|
| 1 | screw                      | 2 | AC adapter connector |
| 3 | AC adapter connector cable |   |                      |

---

## Replacing the AC Adapter Connector

1. Follow the instructions in [Before You Begin](#).
2. Route the AC adapter connector cable and place the AC adapter connector on the computer base.
3. Replace the screw that secures the AC adapter connector to the computer base.

4. Replace the daughter board (see [Replacing the Daughter Board](#)).
5. Replace the middle cover (see [Replacing the Middle Cover](#)).
6. Replace the display assembly (see [Replacing the Display Assembly](#)).
7. Follow the instructions from [step 6](#) to [step 18](#) in [Replacing the System Board](#).
8. Replace the battery (see [Replacing the Battery](#)).

 **CAUTION:** Before turning on the computer, replace all screws and ensure that no stray screws remain inside the computer. Failure to do so may result in damage to the computer.

---

[Back to Contents Page](#)

## Module Cover

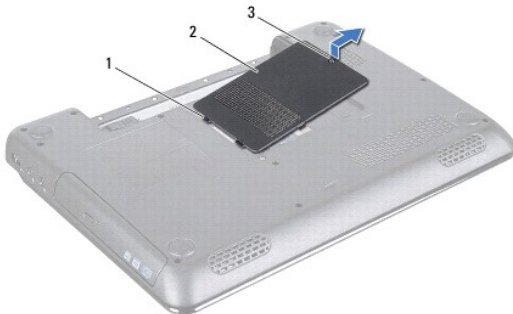
### Dell™ Inspiron™ N4010 Service Manual

- [Removing the Module Cover](#)
- [Replacing the Module Cover](#)

- WARNING:** Before working inside your computer, read the safety information that shipped with your computer. For additional safety best practices information, see the Regulatory Compliance Homepage at [www.dell.com/regulatory\\_compliance](http://www.dell.com/regulatory_compliance).
- CAUTION:** Only a certified service technician should perform repairs on your computer. Damage due to servicing that is not authorized by Dell™ is not covered by your warranty.
- CAUTION:** To avoid electrostatic discharge, ground yourself by using a wrist grounding strap or by periodically touching an unpainted metal surface (such as a connector on your computer).
- CAUTION:** To help prevent damage to the system board, remove the main battery (see [Removing the Battery](#)) before working inside the computer.
- 

## Removing the Module Cover

1. Follow the instructions in [Before You Begin](#).
2. Remove the battery (see [Removing the Battery](#)).
3. Loosen the captive screw that secures the module cover to the computer base.
4. Lift and slide the module cover out of the computer base.



|   |               |   |              |
|---|---------------|---|--------------|
| 1 | tabs (2)      | 2 | module cover |
| 3 | captive screw |   |              |

---

## Replacing the Module Cover

1. Follow the instructions in [Before You Begin](#).
2. Slide the two tabs on the module cover into the slots on the computer base and gently snap the module cover into place.
3. Tighten the captive screw that secures the module cover to the computer base.
4. Replace the battery (see [Replacing the Battery](#)).

- CAUTION:** Before turning on the computer, replace all screws and ensure that no stray screws remain inside the computer. Failure to do so may result in damage to the computer.
-

[Back to Contents Page](#)

## Before You Begin

### Dell™ Inspiron™ N4010 Service Manual

- [Recommended Tools](#)
- [Turning Off Your Computer](#)
- [Before Working Inside Your Computer](#)

This manual provides procedures for removing and installing components in your computer. Unless otherwise noted, each procedure assumes that the following conditions exist:

- 1 You have performed the steps in [Turning Off Your Computer](#) and [Before Working Inside Your Computer](#).
- 1 You have read the safety information that shipped with your computer.
- 1 A component can be replaced or—if purchased separately—installed by performing the removal procedure in the reverse order.

---

## Recommended Tools

The procedures in this document may require the following tools:

- 1 Small flat-blade screwdriver
- 1 Phillips screwdriver
- 1 Plastic scribe
- 1 BIOS executable update program available at [support.dell.com](http://support.dell.com)



---

## Turning Off Your Computer

 **CAUTION:** To avoid losing data, save and close all open files and exit all open programs before you turn off your computer.

1. Save and close all open files and exit all open programs.
2. Shut down the operating system:

*Windows® Vista:*

Click the Start button  , click the arrow  , and then click **Shut Down**.

*Windows® 7:*






Click the Start button  and then click **Shut Down**.


3. Ensure that the computer is turned off. If your computer did not automatically turn off when you shut down the operating system, press and hold the power button until the computer turns off.

---

## Before Working Inside Your Computer

Use the following safety guidelines to help protect your computer from potential damage and to help to ensure your own personal safety.


-  **WARNING:** Before working inside your computer, read the safety information that shipped with your computer. For additional safety best practices information, see the Regulatory Compliance Homepage at [www.dell.com/regulatory\\_compliance](http://www.dell.com/regulatory_compliance).
-  **CAUTION:** To avoid electrostatic discharge, ground yourself by using a wrist grounding strap or by periodically touching an unpainted metal surface (such as a connector on your computer).
-  **CAUTION:** Handle components and cards with care. Do not touch the components or contacts on a card. Hold a card by its edges or by its metal mounting bracket. Hold a component such as a processor by its edges, not by its pins.
-  **CAUTION:** Only a certified service technician should perform repairs on your computer. Damage due to servicing that is not authorized by Dell™ is not covered by your warranty.
-  **CAUTION:** When you disconnect a cable, pull on its connector or on its pull-tab, not on the cable itself. Some cables have connectors with locking tabs; if you are disconnecting this type of cable, press in on the locking tabs before you disconnect the cable. As you pull connectors apart, keep them evenly aligned to avoid bending any connector pins. Also, before you connect a cable, ensure that both connectors are correctly oriented and aligned.

 **CAUTION:** To avoid damaging the computer, perform the following steps before you begin working inside the computer.

1. Ensure that the work surface is flat and clean to prevent the computer cover from being scratched.
2. Turn off your computer (see [Turning Off Your Computer](#)) and all attached devices.

 **CAUTION:** To disconnect a network cable, first unplug the cable from your computer and then unplug the cable from the network device.

3. Disconnect all telephone or network cables from the computer.
4. Press and eject any installed cards from the 7-in-1 media card reader.
5. Disconnect your computer and all attached devices from their electrical outlets.
6. Disconnect all attached devices from your computer.

 **CAUTION:** To help prevent damage to the system board, remove the main battery (see [Removing the Battery](#)) before working inside the computer.

7. Remove the battery (see [Removing the Battery](#)).
8. Turn the computer top-side up, open the display, and press the power button to ground the system board.


---

[Back to Contents Page](#)

## Flashing the BIOS

### Dell™ Inspiron™ N4010 Service Manual

1. Turn on the computer.
2. Go to [support.dell.com](http://support.dell.com).
3. Click **Drivers & Downloads**→ **Select Model**.
4. Locate the BIOS update file for your computer:


 **NOTE:** The Service Tag for your computer is located at the bottom of the computer.

If you have your computer's Service Tag:

- a. Click **Enter a Service Tag**.
- b. Enter your computer's Service Tag in the **Enter a service tag:** field, click **Go**, and proceed to [step 5](#).

If you do not have your computer's Service Tag:

- a. Select the type of product in the **Select Your Product Family** list.
- b. Select the product brand in the **Select Your Product Line** list.
- c. Select the product model number in the **Select Your Product Model** list.

 **NOTE:** If you have selected a different model and want to start over again, click **Start Over** on the top right of the menu.

- d. Click **Confirm**.
5. A list of results appear on the screen. Click **BIOS**.
6. Click **Download Now** to download the latest BIOS file.  
The **File Download** window appears.
7. Click **Save** to save the file on your desktop. The file downloads to your desktop.
8. Click **Close** if the **Download Complete** window appears.  
The file icon appears on your desktop and is titled the same as the downloaded BIOS update file.
9. Double-click the file icon on the desktop and follow the instructions on the screen.

[Back to Contents Page](#)

## Internal Card With Bluetooth® Wireless Technology

Dell™ Inspiron™ N4010 Service Manual

- [Removing the Bluetooth Card](#)
- [Replacing the Bluetooth Card](#)

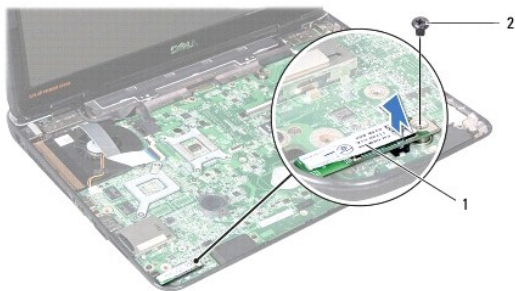
- WARNING:** Before working inside your computer, read the safety information that shipped with your computer. For additional safety best practices information, see the Regulatory Compliance Homepage at [www.dell.com/regulatory\\_compliance](http://www.dell.com/regulatory_compliance).
- CAUTION:** Only a certified service technician should perform repairs on your computer. Damage due to servicing that is not authorized by Dell™ is not covered by your warranty.
- CAUTION:** To avoid electrostatic discharge, ground yourself by using a wrist grounding strap or by periodically touching an unpainted metal surface (such as a connector on your computer).
- CAUTION:** To help prevent damage to the system board, remove the main battery (see [Removing the Battery](#)) before working inside the computer.

If you ordered a card with Bluetooth wireless technology with your computer, it is already installed.

---

### Removing the Bluetooth Card

1. Follow the instructions in [Before You Begin](#).
2. Remove the battery (see [Removing the Battery](#)).
3. Follow the instructions from [step 3](#) to [step 4](#) in [Removing the Optical Drive](#).
4. Remove the module cover (see [Removing the Module Cover](#)).
5. Remove the memory module(s) (see [Removing the Memory Module\(s\)](#)).
6. Remove the keyboard (see [Removing the Keyboard](#)).
7. Remove the palm rest (see [Removing the Palm Rest](#)).
8. Remove the screw that secures the Bluetooth card to the system board.
9. Lift the Bluetooth card to disconnect it from the connector on the system board.



|   |                |   |       |
|---|----------------|---|-------|
| 1 | Bluetooth card | 2 | screw |
|---|----------------|---|-------|


---

### Replacing the Bluetooth Card

1. Follow the instructions in [Before You Begin](#).
2. Align the connector on the Bluetooth card with the connector on the system board and press the Bluetooth card until it is fully seated.
3. Replace the screw that secures the Bluetooth card to the system board.



4. Replace the palm rest (see [Replacing the Palm Rest](#)).
5. Replace the keyboard (see [Replacing the Keyboard](#)).
6. Replace the memory module(s) (see [Replacing the Memory Module\(s\)](#)).
7. Replace the module cover (see [Replacing the Module Cover](#)).
8. Follow the instructions from [step 4](#) to [step 5](#) in [Replacing the Optical Drive](#).
9. Replace the battery (see [Replacing the Battery](#)).

 **CAUTION:** Before turning on the computer, replace all screws and ensure that no stray screws remain inside the computer. Failure to do so may result in damage to the computer.

---

[Back to Contents Page](#)

## Camera Module

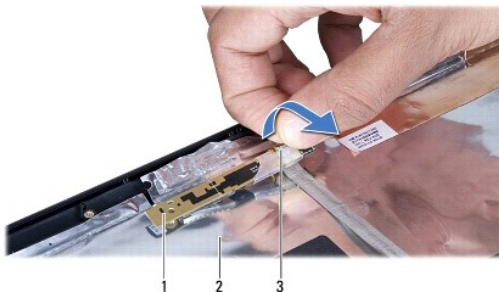
### Dell™ Inspiron™ N4010 Service Manual

- [Removing the Camera Module](#)
- [Replacing the Camera Module](#)

- WARNING:** Before working inside your computer, read the safety information that shipped with your computer. For additional safety best practices information, see the Regulatory Compliance Homepage at [www.dell.com/regulatory\\_compliance](http://www.dell.com/regulatory_compliance).
- CAUTION:** Only a certified service technician should perform repairs on your computer. Damage due to servicing that is not authorized by Dell™ is not covered by your warranty.
- CAUTION:** To avoid electrostatic discharge, ground yourself by using a wrist grounding strap or by periodically touching an unpainted metal surface (such as a connector on your computer).
- CAUTION:** To help prevent damage to the system board, remove the main battery (see [Removing the Battery](#)) before working inside the computer.
- 

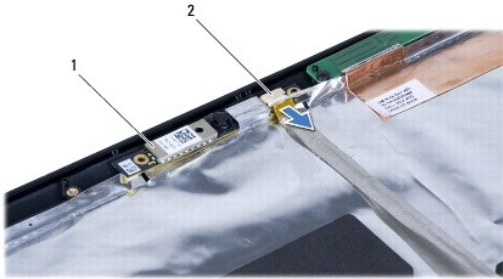
## Removing the Camera Module

1. Follow the instructions in [Before You Begin](#).
2. Remove the battery (see [Removing the Battery](#)).
3. Follow the instructions from [step 3](#) to [step 4](#) in [Removing the Optical Drive](#).
4. Remove the module cover (see [Removing the Module Cover](#)).
5. Remove the memory module(s) (see [Removing the Memory Module\(s\)](#)).
6. Remove the keyboard (see [Removing the Keyboard](#)).
7. Remove the palm rest (see [Removing the Palm Rest](#)).
8. Remove the display assembly (see [Removing the Display Assembly](#)).
9. Remove the display bezel (see [Removing the Display Bezel](#)).
10. Remove the display panel (see [Removing the Display Panel](#)).
11. Peel the camera module from the display cover.
12. Lift the camera module and turn it over.
13. Remove the tape that secures the camera cable to the connector on the camera module.



|   |               |   |               |
|---|---------------|---|---------------|
| 1 | camera module | 2 | display cover |
| 3 | tape          |   |               |

14. Disconnect the camera cable from the connector on the camera module.



|   |               |   |                        |
|---|---------------|---|------------------------|
| 1 | camera module | 2 | camera cable connector |
|---|---------------|---|------------------------|

---

## Replacing the Camera Module

1. Follow the instructions in [Before You Begin](#).
2. Connect the camera cable to the connector on the camera module. Replace the tape to secure the camera cable to the camera module.
3. Align the slots on the camera module with the alignment guides on the display cover.
4. Adhere the camera module on the display cover.
5. Replace the display panel (see [Replacing the Display Panel](#)).
6. Replace the display bezel (see [Replacing the Display Bezel](#)).
7. Replace the display assembly (see [Replacing the Display Assembly](#)).
8. Replace the palm rest (see [Replacing the Palm Rest](#)).
9. Replace the keyboard (see [Replacing the Keyboard](#)).
10. Replace the memory module(s) (see [Replacing the Memory Module\(s\)](#)).
11. Replace the module cover (see [Replacing the Module Cover](#)).
12. Follow the instructions from [step 4](#) to [step 5](#) in [Replacing the Optical Drive](#).
13. Replace the battery (see [Replacing the Battery](#)).

**⚠ CAUTION:** Before turning on the computer, replace all screws and ensure that no stray screws remain inside the computer. Failure to do so may result in damage to the computer.

---

[Back to Contents Page](#)

[Back to Contents Page](#)

## Coin-Cell Battery

Dell™ Inspiron™ N4010 Service Manual

- [Removing the Coin-Cell Battery](#)
- [Replacing the Coin-Cell Battery](#)

- WARNING:** Before working inside your computer, read the safety information that shipped with your computer. For additional safety best practices information, see the Regulatory Compliance Homepage at [www.dell.com/regulatory\\_compliance](http://www.dell.com/regulatory_compliance).
- CAUTION:** Only a certified service technician should perform repairs on your computer. Damage due to servicing that is not authorized by Dell™ is not covered by your warranty.
- CAUTION:** To avoid electrostatic discharge, ground yourself by using a wrist grounding strap or by periodically touching an unpainted metal surface (such as a connector on your computer).
- CAUTION:** To help prevent damage to the system board, remove the main battery (see [Removing the Battery](#)) before working inside the computer.
- 

### Removing the Coin-Cell Battery

1. Follow the instructions in [Before You Begin](#).
2. Remove the battery (see [Removing the Battery](#)).
3. Follow the instructions from [step 3](#) to [step 4](#) in [Removing the Optical Drive](#).
4. Remove the module cover (see [Removing the Module Cover](#)).
5. Remove the memory module(s) (see [Removing the Memory Module\(s\)](#)).
6. Remove the keyboard (see [Removing the Keyboard](#)).
7. Remove the palm rest (see [Removing the Palm Rest](#)).
8. Use a plastic scribe to pry up the coin-cell battery from the slot on the system board.




|   |                |   |                   |
|---|----------------|---|-------------------|
| 1 | plastic scribe | 2 | coin-cell battery |
|---|----------------|---|-------------------|

---

### Replacing the Coin-Cell Battery

1. Follow the instructions in [Before You Begin](#).
2. Hold the coin-cell battery with the positive side up.
3. Slide the coin-cell battery into the slot and gently press until it snaps in place.
4. Replace the palm rest (see [Replacing the Palm Rest](#)).
5. Replace the keyboard (see [Replacing the Keyboard](#)).
6. Replace the memory module(s) (see [Replacing the Memory Module\(s\)](#)).
7. Replace the module cover (see [Replacing the Module Cover](#)).

8. Follow the instructions from [step 4](#) to [step 5](#) in [Replacing the Optical Drive](#).
9. Replace the battery (see [Replacing the Battery](#)).

 **CAUTION:** Before turning on the computer, replace all screws and ensure that no stray screws remain inside the computer. Failure to do so may result in damage to the computer.

---

[Back to Contents Page](#)

[Back to Contents Page](#)

## Processor Module

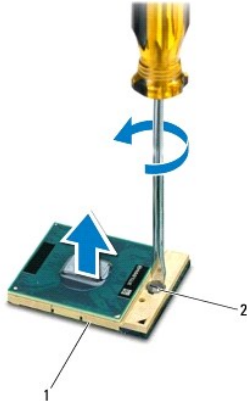
Dell™ Inspiron™ N4010 Service Manual

- [Removing the Processor Module](#)
- [Replacing the Processor Module](#)

- WARNING:** Before working inside your computer, read the safety information that shipped with your computer. For additional safety best practices information, see the Regulatory Compliance Homepage at [www.dell.com/regulatory\\_compliance](http://www.dell.com/regulatory_compliance).
- CAUTION:** Only a certified service technician should perform repairs on your computer. Damage due to servicing that is not authorized by Dell™ is not covered by your warranty.
- CAUTION:** To avoid electrostatic discharge, ground yourself by using a wrist grounding strap or by periodically touching an unpainted metal surface (such as a connector on your computer).
- CAUTION:** To prevent intermittent contact between the ZIF-socket cam screw and the processor when removing or replacing the processor, press to apply slight pressure to the center of the processor while turning the cam screw.
- CAUTION:** To avoid damage to the processor, hold the screwdriver so that it is perpendicular to the processor when turning the cam screw.
- CAUTION:** To help prevent damage to the system board, remove the main battery (see [Removing the Battery](#)) before working inside the computer.
- 

### Removing the Processor Module


1. Follow the instructions in [Before You Begin](#).
2. Remove the thermal cooling assembly (see [Removing the Thermal Cooling Assembly](#)).
3. To loosen the ZIF socket, use a small, flat-blade screwdriver and rotate the ZIF-socket cam screw counterclockwise until it comes to the cam stop.




|   |            |   |                      |
|---|------------|---|----------------------|
| 1 | ZIF socket | 2 | ZIF-socket cam screw |
|---|------------|---|----------------------|

- CAUTION:** To ensure maximum cooling for the processor, do not touch the heat transfer areas on the processor thermal-cooling assembly. The oils in your skin can reduce the heat transfer capability of the thermal pads.
- CAUTION:** When removing the processor module, pull the module straight up. Be careful not to bend the pins on the processor module.
4. Lift the processor module from the ZIF socket.
- 


### Replacing the Processor Module

 **NOTE:** If a new processor is installed, you will receive a new thermal-cooling assembly, which will include an affixed thermal pad, or you will receive a new thermal pad along with documentation to illustrate proper installation.

1. Follow the instructions in [Before You Begin](#).
2. Align the pin-1 corner of the processor module with the pin-1 corner of the ZIF socket, then insert the processor module.

 **NOTE:** The pin-1 corner of the processor module has a triangle that aligns with the triangle on the pin-1 corner of the ZIF socket.

When the processor module is properly seated, all four corners are aligned at the same height. If one or more corners of the module are higher than the others, the module is not seated properly.

 **CAUTION:** To avoid damage to the processor, hold the screwdriver perpendicular to the processor when turning the cam screw.

3. Tighten the ZIF socket by turning the cam screw clockwise to secure the processor module to the system board.
4. Replace the thermal cooling assembly (see [Replacing the Thermal Cooling Assembly](#)).

---

[Back to Contents Page](#)

## Thermal Cooling Assembly

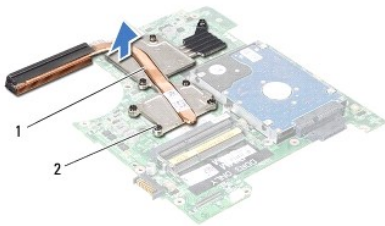
### Dell™ Inspiron™ N4010 Service Manual

- [Removing the Thermal Cooling Assembly](#)
- [Replacing the Thermal Cooling Assembly](#)

- ⚠ **WARNING:** Before working inside your computer, read the safety information that shipped with your computer. For additional safety best practices information, see the Regulatory Compliance Homepage at [www.dell.com/regulatory\\_compliance](http://www.dell.com/regulatory_compliance).
  - ⚠ **WARNING:** If you remove the thermal cooling assembly from the computer when the heat sink is hot, do not touch the metal housing of the thermal cooling assembly.
  - ⚠ **CAUTION:** Only a certified service technician should perform repairs on your computer. Damage due to servicing that is not authorized by Dell™ is not covered by your warranty.
  - ⚠ **CAUTION:** To avoid electrostatic discharge, ground yourself by using a wrist grounding strap or by periodically touching an unpainted metal surface (such as a connector on your computer).
  - ⚠ **CAUTION:** To help prevent damage to the system board, remove the main battery (see [Removing the Battery](#)) before working inside the computer.
- 

## Removing the Thermal Cooling Assembly

1. Follow the instructions in [Before You Begin](#).
2. Follow the instructions from [step 2](#) to [step 16](#) in [Removing the System Board](#).
3. In sequential order (indicated on the thermal cooling assembly), loosen the seven captive screws that secure the thermal cooling assembly to the system board.
4. Lift the thermal cooling assembly off the system board.



|                            |                      |
|----------------------------|----------------------|
| 1 thermal cooling assembly | 2 captive screws (7) |
|----------------------------|----------------------|

## Replacing the Thermal Cooling Assembly

🔧 **NOTE:** This procedure assumes that you have already removed the thermal cooling assembly and are ready to replace it.

1. Follow the instructions in [Before You Begin](#).
2. Place the thermal cooling assembly on the system board.
3. Align the seven captive screws on the thermal cooling assembly with the screw holes on the system board and tighten the screws in sequential order (indicated on the thermal cooling assembly).
4. Follow the instructions from [step 5](#) to [step 20](#) in [Replacing the System Board](#).

⚠ **CAUTION:** Before turning on the computer, replace all screws and ensure that no stray screws remain inside the computer. Failure to do so may result in damage to the computer.

---





[Back to Contents Page](#)

## Daughter Board

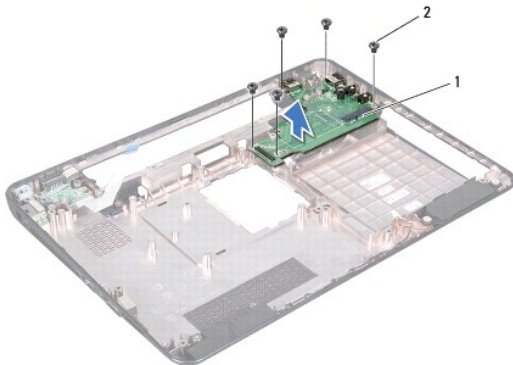
Dell™ Inspiron™ N4010 Service Manual

- [Removing the Daughter Board](#)
- [Replacing the Daughter Board](#)

- WARNING:** Before working inside your computer, read the safety information that shipped with your computer. For additional safety best practices information, see the Regulatory Compliance Homepage at [www.dell.com/regulatory\\_compliance](http://www.dell.com/regulatory_compliance).
- CAUTION:** Only a certified service technician should perform repairs on your computer. Damage due to servicing that is not authorized by Dell™ is not covered by your warranty.
- CAUTION:** To avoid electrostatic discharge, ground yourself by using a wrist grounding strap or by periodically touching an unpainted metal surface (such as a connector on your computer).
- CAUTION:** To help prevent damage to the system board, remove the main battery (see [Removing the Battery](#)) before working inside the computer.
- 

### Removing the Daughter Board

1. Follow the instructions in [Before You Begin](#).
2. Remove the battery (see [Removing the Battery](#)).
3. Follow the instructions from [step 4](#) to [step 15](#) in [Removing the System Board](#).
4. Remove the Mini-Card(s) (see [Removing the Mini-Card\(s\)](#)).
5. Remove the display assembly (see [Removing the Display Assembly](#)).
6. Remove the middle cover (see [Removing the Middle Cover](#)).
7. Remove the five screws that secure the daughter board to the computer base.
8. Lift the daughter board out of the computer base.




|   |                |   |            |
|---|----------------|---|------------|
| 1 | daughter board | 2 | screws (5) |
|---|----------------|---|------------|

---

### Replacing the Daughter Board

1. Follow the instructions in [Before You Begin](#).
2. Align the connectors on the daughter board with the slots on the computer base.
3. Replace the five screws that secure the daughter board to the computer base.

4. Replace the middle cover (see [Replacing the Middle Cover](#)).
5. Replace the display assembly (see [Replacing the Display Assembly](#)).
6. Replace the Mini-Card(s) (see [Replacing the Mini-Card\(s\)](#)).
7. Follow the instructions from [step 6](#) to [step 18](#) in [Replacing the System Board](#).
8. Replace the battery (see [Replacing the Battery](#)).

 **CAUTION:** Before turning on the computer, replace all screws and ensure that no stray screws remain inside the computer. Failure to do so may result in damage to the computer.

---

[Back to Contents Page](#)

[Back to Contents Page](#)

## Display

### Dell™ Inspiron™ N4010 Service Manual

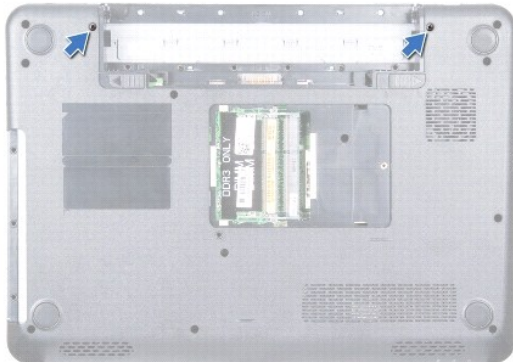
- [Display Assembly](#)
- [Display Bezel](#)
- [Display Panel](#)
- [Display Hinges](#)
- [Hinge Caps](#)

- ⚠ WARNING:** Before working inside your computer, read the safety information that shipped with your computer. For additional safety best practices information, see the Regulatory Compliance Homepage at [www.dell.com/regulatory\\_compliance](http://www.dell.com/regulatory_compliance).
- ⚠ CAUTION:** Only a certified service technician should perform repairs on your computer. Damage due to servicing that is not authorized by Dell™ is not covered by your warranty.
- ⚠ CAUTION:** To avoid electrostatic discharge, ground yourself by using a wrist grounding strap or by periodically touching an unpainted metal surface (such as a connector on your computer).
- ⚠ CAUTION:** To help prevent damage to the system board, remove the main battery (see [Removing the Battery](#)) before working inside the computer.
- 

## Display Assembly

### Removing the Display Assembly

1. Follow the instructions in [Before You Begin](#).
2. Remove the battery (see [Removing the Battery](#)).
3. Follow the instructions from [step 3](#) to [step 4](#) in [Removing the Optical Drive](#).
4. Remove the module cover (see [Removing the Module Cover](#)).
5. Remove the memory module(s) (see [Removing the Memory Module\(s\)](#)).
6. Remove the keyboard (see [Removing the Keyboard](#)).
7. Remove the palm rest (see [Removing the Palm Rest](#)).
8. Remove the two screws that secure the display assembly to the computer base.



9. Turn the computer over and open the display as far as possible.
10. Disconnect the antenna cables from the Mini-Card(s) (see [Removing the Mini-Card\(s\)](#)).
11. Disconnect the display cable from the connector on the system board, and remove the display cable grounding screw.

12. Make a note of the Mini-Card antenna cables and display cable routing and remove the cables from the routing guides.
13. Hold the display assembly in place and remove the four screws that secure the display assembly to the computer base.
14. Lift and remove the display assembly out of the computer base.



|   |                               |   |               |
|---|-------------------------------|---|---------------|
| 1 | display cable grounding screw | 2 | display cable |
| 3 | Mini-Card antenna cables      | 4 | screws (4)    |
| 5 | display assembly              |   |               |


## Replacing the Display Assembly

1. Follow the instructions in [Before You Begin](#).
2. Place the display assembly in position and replace the four screws (two on each side) that secure the display assembly to the computer base.
3. Route the Mini-Card antenna cables and display cable through the routing guides.
4. Connect the display cable to the connector on the system board, and replace the display cable grounding screw.
5. Connect the antenna cables to the Mini-Card(s) (see [Replacing the Mini-Card\(s\)](#)).
6. Close the display and turn the computer over.
7. Replace the two screws that secure the display assembly to the computer base.
8. Replace the palm rest (see [Replacing the Palm Rest](#)).
9. Replace the keyboard (see [Replacing the Keyboard](#)).
10. Replace the memory module(s) (see [Replacing the Memory Module\(s\)](#)).
11. Replace the module cover (see [Replacing the Module Cover](#)).
12. Follow the instructions from [step 4](#) to [step 5](#) in [Replacing the Optical Drive](#).
13. Replace the battery (see [Replacing the Battery](#)).

**CAUTION:** Before turning on the computer, replace all screws and ensure that no stray screws remain inside the computer. Failure to do so may result in damage to the computer.

## Display Bezel

## Removing the Display Bezel

 **CAUTION:** The display bezel is extremely fragile. Be careful when removing it to prevent damaging the bezel.

1. Follow the instructions in [Before You Begin](#).
2. Remove the display assembly (see [Removing the Display Assembly](#)).
3. Using your fingertips, carefully pry up the inside edge of the display bezel.
4. Remove the display bezel.



|   |               |
|---|---------------|
| 1 | display bezel |
|---|---------------|

## Replacing the Display Bezel

1. Follow the instructions in [Before You Begin](#).
  2. Realign the display bezel over the display panel, and gently snap into place.
  3. Replace the display assembly (see [Replacing the Display Assembly](#)).
- 

## Display Panel

### Removing the Display Panel

1. Follow the instructions in [Before You Begin](#).
2. Remove the display assembly (see [Removing the Display Assembly](#)).
3. Remove the display bezel (see [Removing the Display Bezel](#)).
4. Remove the six screws that secure the display panel to the display cover.



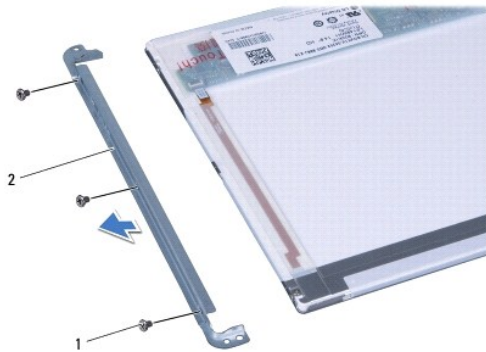
|   |               |   |               |
|---|---------------|---|---------------|
| 1 | display cover | 2 | display panel |
| 3 | screws (6)    |   |               |

5. Make a note of the display cable routing on the display cover.
6. Turn the display panel over and place it on a clean surface.
7. Lift the tape that secures the display cable to the display board connector and disconnect the display cable.



|   |               |   |                           |
|---|---------------|---|---------------------------|
| 1 | display cable | 2 | display board connector   |
| 3 | tape          | 4 | back of the display panel |

8. Remove the six screws (three on each side) that secure the display panel brackets to the display panel.



|   |            |   |                            |
|---|------------|---|----------------------------|
| 1 | screws (6) | 2 | display panel brackets (2) |
|---|------------|---|----------------------------|

## Replacing the Display Panel

1. Follow the instructions in [Before You Begin](#).

2. Replace the six screws (three on each side) that secure the display panel brackets to the display panel.
3. Connect the display cable to the display board connector and secure it with the tape.
4. Align the screw holes on the display panel with the screw holes on the display cover and replace the six screws.
5. Replace the display bezel (see [Replacing the Display Bezel](#)).
6. Replace the display assembly (see [Replacing the Display Assembly](#)).

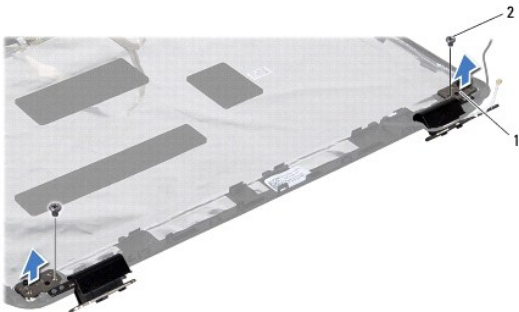
**CAUTION:** Before turning on the computer, replace all screws and ensure that no stray screws remain inside the computer. Failure to do so may result in damage to the computer.

---

## Display Hinges

### Removing the Display Hinges

1. Follow the instructions in [Before You Begin](#).
2. Remove the display assembly (see [Removing the Display Assembly](#)).
3. Remove the display bezel (see [Removing the Display Bezel](#)).
4. Remove the display panel (see [Removing the Display Panel](#)).
5. Remove the two screws (one on each side) that secure the display hinges to the display cover and remove the display hinges.




|   |                    |   |            |
|---|--------------------|---|------------|
| 1 | display hinges (2) | 2 | screws (2) |
|---|--------------------|---|------------|

6. Remove the hinge caps (see [Removing the Hinge Caps](#)).

### Replacing the Display Hinges

1. Follow the instructions in [Before You Begin](#).
2. Replace the hinge caps (see [Replacing the Hinge Caps](#)).
3. Route the Mini-Card antenna cables on the display hinge.
4. Align the screw hole on the display hinges with the screw hole on the display cover and replace the two screws (one on each side).
5. Replace the display panel (see [Replacing the Display Panel](#)).
6. Replace the display bezel (see [Replacing the Display Bezel](#)).
7. Replace the display assembly (see [Replacing the Display Assembly](#)).



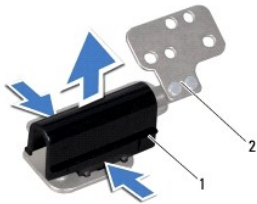
 **CAUTION:** Before turning on the computer, replace all screws and ensure that no stray screws remain inside the computer. Failure to do so may result in damage to the computer.

---

## Hinge Caps

### Removing the Hinge Caps

1. Follow the instructions in [Before You Begin](#).
2. Remove the display assembly (see [Removing the Display Assembly](#)).
3. Remove the display bezel (see [Removing the Display Bezel](#)).
4. Remove the display panel (see [Removing the Display Panel](#)).
5. Remove the display hinges (see [Removing the Display Hinges](#)).
6. Press both sides of each hinge cap and lift the hinge caps out of the display hinges.



|   |                |   |                    |
|---|----------------|---|--------------------|
| 1 | hinge caps (2) | 2 | display hinges (2) |
|---|----------------|---|--------------------|

### Replacing the Hinge Caps

1. Follow the instructions in [Before You Begin](#).
2. Place the hinge caps on the display hinges and snap them into place.
3. Replace the display hinges (see [Replacing the Display Hinges](#)).
4. Replace the display panel (see [Replacing the Display Panel](#)).
5. Replace the display bezel (see [Replacing the Display Bezel](#)).
6. Replace the display assembly (see [Replacing the Display Assembly](#)).

---

[Back to Contents Page](#)

## Thermal Fan

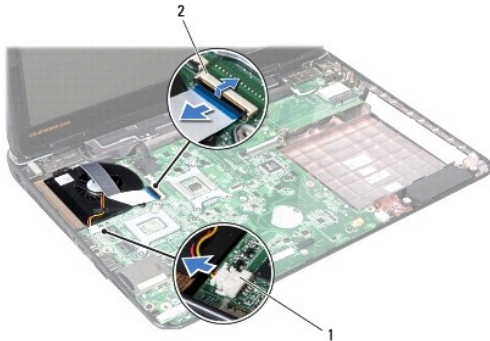
### Dell™ Inspiron™ N4010 Service Manual

- [Removing the Thermal Fan](#)
- [Replacing the Thermal Fan](#)

- WARNING:** Before working inside your computer, read the safety information that shipped with your computer. For additional safety best practices information, see the Regulatory Compliance Homepage at [www.dell.com/regulatory\\_compliance](http://www.dell.com/regulatory_compliance).
- CAUTION:** Only a certified service technician should perform repairs on your computer. Damage due to servicing that is not authorized by Dell™ is not covered by your warranty.
- CAUTION:** To avoid electrostatic discharge, ground yourself by using a wrist grounding strap or by periodically touching an unpainted metal surface (such as a connector on your computer).
- CAUTION:** To help prevent damage to the system board, remove the main battery (see [Removing the Battery](#)) before working inside the computer.
- 

## Removing the Thermal Fan

1. Follow the instructions in [Before You Begin](#).
2. Remove the battery (see [Removing the Battery](#)).
3. Follow the instructions from [step 3](#) to [step 4](#) in [Removing the Optical Drive](#).
4. Remove the module cover (see [Removing the Module Cover](#)).
5. Remove the memory module(s) (see [Removing the Memory Module\(s\)](#)).
6. Remove the keyboard (see [Removing the Keyboard](#)).
7. Remove the palm rest (see [Removing the Palm Rest](#)).
8. Disconnect the I/O board cable and the thermal fan cable from the connectors on the system board.



|   |                             |   |                           |
|---|-----------------------------|---|---------------------------|
| 1 | thermal fan cable connector | 2 | I/O board cable connector |
|---|-----------------------------|---|---------------------------|

9. Remove the two screws that secure the thermal fan to the computer base.
10. Lift the thermal fan along with the cable, off the computer base.



|   |                   |   |             |
|---|-------------------|---|-------------|
| 1 | screws (2)        | 2 | thermal fan |
| 3 | thermal fan cable |   |             |

---

## Replacing the Thermal Fan

1. Follow the instructions in [Before You Begin](#).
2. Place the thermal fan on the computer base and replace the two screws.
3. Connect the I/O board cable and the thermal fan cable to the connectors on the system board.
4. Replace the palm rest (see [Replacing the Palm Rest](#)).
5. Replace the keyboard (see [Replacing the Keyboard](#)).
6. Replace the memory module(s) (see [Replacing the Memory Module\(s\)](#)).
7. Replace the module cover (see [Replacing the Module Cover](#)).
8. Follow the instructions from [step 4](#) to [step 5](#) in [Replacing the Optical Drive](#).
9. Replace the battery (see [Replacing the Battery](#)).

**CAUTION:** Before turning on the computer, replace all screws and ensure that no stray screws remain inside the computer. Failure to do so may result in damage to the computer.

---

[Back to Contents Page](#)

## Hard Drive

### Dell™ Inspiron™ N4010 Service Manual

- [Removing the Hard Drive](#)
- [Replacing the Hard Drive](#)

- ⚠ **WARNING:** Before working inside your computer, read the safety information that shipped with your computer. For additional safety best practices information, see the Regulatory Compliance Homepage at [www.dell.com/regulatory\\_compliance](http://www.dell.com/regulatory_compliance).
  - ⚠ **WARNING:** If you remove the hard drive from the computer when the drive is hot, do not touch the metal housing of the hard drive.
  - ⚠ **CAUTION:** Only a certified service technician should perform repairs on your computer. Damage due to servicing that is not authorized by Dell™ is not covered by your warranty.
  - ⚠ **CAUTION:** To prevent data loss, turn off your computer (see [Turning Off Your Computer](#)) before removing the hard drive. Do not remove the hard drive while the computer is On or in Sleep state.
  - ⚠ **CAUTION:** To avoid electrostatic discharge, ground yourself by using a wrist grounding strap or by periodically touching an unpainted metal surface (such as a connector on your computer).
  - ⚠ **CAUTION:** Hard drives are extremely fragile. Exercise care when handling the hard drive.
  - ⚠ **CAUTION:** To help prevent damage to the system board, remove the main battery (see [Removing the Battery](#)) before working inside the computer.
  - 🔧 **NOTE:** Dell does not guarantee compatibility or provide support for hard drives from sources other than Dell.
  - 🔧 **NOTE:** If you are installing a hard drive from a source other than Dell, you need to install an operating system, drivers, and utilities on the new hard drive (see the *Dell Technology Guide*).
- 

## Removing the Hard Drive

1. Follow the instructions in [Before You Begin](#).
2. Follow the instructions from [step 2](#) to [step 16](#) in [Removing the System Board](#).

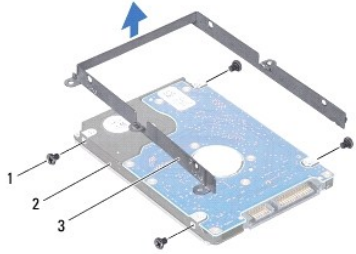
- ⚠ **CAUTION:** When the hard drive is not in the computer, store it in protective antistatic packaging (see "Protecting Against Electrostatic Discharge" in the safety instructions that shipped with your computer).

3. Remove the two screws that secure the hard-drive assembly to the system board.
4. Slide the hard-drive assembly to disconnect it from the connector on the system board.
5. Lift the hard-drive assembly away from the system board.



|   |            |   |                     |
|---|------------|---|---------------------|
| 1 | screws (2) | 2 | hard-drive assembly |
|---|------------|---|---------------------|

6. Remove the four screws that secure the hard-drive bracket to the hard drive.
7. Lift the hard-drive bracket off the hard drive.



|   |                    |   |            |
|---|--------------------|---|------------|
| 1 | screws (4)         | 2 | hard drive |
| 3 | hard-drive bracket |   |            |

---

## Replacing the Hard Drive

1. Follow the instructions in [Before You Begin](#).
2. Remove the new drive from its packaging.  
Save the original packaging for storing or shipping the hard drive.
3. Align the screw holes on the hard-drive bracket with the screw holes on the hard drive and replace the four screws.
4. Slide and push the hard-drive assembly to connect it to connector on the system board.
5. Replace the two screws that secure the hard-drive assembly to the system board.
6. Follow the instructions from [step 5](#) to [step 20](#) in [Replacing the System Board](#).

**⚠ CAUTION:** Before turning on the computer, replace all screws and ensure that no stray screws remain inside the computer. Failure to do so may result in damage to the computer.

7. Install the operating system for your computer, as needed. See "Restoring Your Operating System" in the *Setup Guide*.
8. Install the drivers and utilities for your computer, as needed. For more information, see the *Dell Technology Guide*.

---

[Back to Contents Page](#)

## Middle Cover

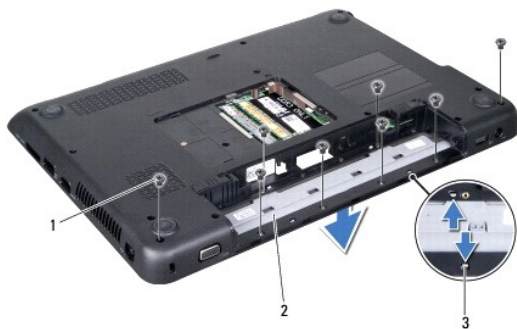
### Dell™ Inspiron™ N4010 Service Manual

- [Removing the Middle Cover](#)
- [Replacing the Middle Cover](#)

- WARNING:** Before working inside your computer, read the safety information that shipped with your computer. For additional safety best practices information, see the Regulatory Compliance Homepage at [www.dell.com/regulatory\\_compliance](http://www.dell.com/regulatory_compliance).
- CAUTION:** To avoid electrostatic discharge, ground yourself by using a wrist grounding strap or by periodically touching an unpainted metal surface.
- CAUTION:** Only a certified service technician should perform repairs on your computer. Damage due to servicing that is not authorized by Dell™ is not covered by your warranty.
- CAUTION:** To help prevent damage to the system board, remove the main battery (see [Removing the Battery](#)) before working inside the computer.
- 

## Removing the Middle Cover

1. Follow the instructions in [Before You Begin](#).
2. Remove the battery (see [Removing the Battery](#)).
3. Follow the instructions from [step 3](#) to [step 4](#) in [Removing the Optical Drive](#).
4. Remove the module cover (see [Removing the Module Cover](#)).
5. Remove the memory module(s) (see [Removing the Memory Module\(s\)](#)).
6. Remove the keyboard (see [Removing the Keyboard](#)).
7. Remove the palm rest (see [Removing the Palm Rest](#)).
8. Remove the display assembly (see [Removing the Display Assembly](#)).
9. Remove the eight screws that secure the middle cover to the computer base.
10. Release the four tabs that secure the middle cover to the computer base.
11. Pull the middle cover down.




|   |            |   |              |
|---|------------|---|--------------|
| 1 | screws (8) | 2 | middle cover |
| 3 | tabs (4)   |   |              |

---

## Replacing the Middle Cover

1. Follow the instructions in [Before You Begin](#).

2. Align the four tabs on the middle cover with the slots on the computer base and snap the middle cover into place.
3. Replace the eight screws that secure the middle cover to the computer base.
4. Replace the display assembly (see [Replacing the Display Assembly](#)).
5. Replace the palm rest (see [Replacing the Palm Rest](#)).
6. Replace the keyboard (see [Replacing the Keyboard](#)).
7. Replace the memory module(s) (see [Replacing the Memory Module\(s\)](#)).
8. Replace the module cover (see [Replacing the Module Cover](#)).
9. Follow the instructions from [step 4](#) to [step 5](#) in [Replacing the Optical Drive](#).
10. Replace the battery (see [Replacing the Battery](#)).

 **CAUTION:** Before turning on the computer, replace all screws and ensure that no stray screws remain inside the computer. Failure to do so may result in damage to the computer.

---

[Back to Contents Page](#)

[Back to Contents Page](#)

## I/O Board

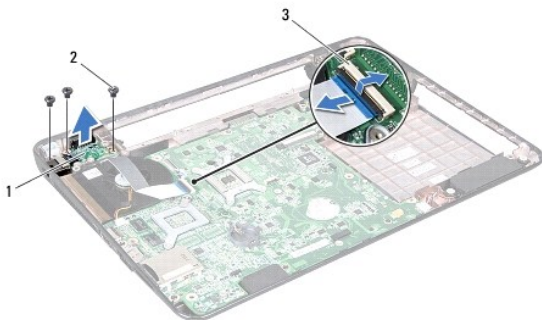
### Dell™ Inspiron™ N4010 Service Manual

- [Removing the I/O Board](#)
- [Replacing the I/O Board](#)

- WARNING:** Before working inside your computer, read the safety information that shipped with your computer. For additional safety best practices information, see the Regulatory Compliance Homepage at [www.dell.com/regulatory\\_compliance](http://www.dell.com/regulatory_compliance).
- CAUTION:** Only a certified service technician should perform repairs on your computer. Damage due to servicing that is not authorized by Dell™ is not covered by your warranty.
- CAUTION:** To avoid electrostatic discharge, ground yourself by using a wrist grounding strap or by periodically touching an unpainted metal surface (such as a connector on your computer).
- CAUTION:** To help prevent damage to the system board, remove the main battery (see [Removing the Battery](#)) before working inside the computer.
- 

## Removing the I/O Board

1. Follow the instructions in [Before You Begin](#).
2. Remove the battery (see [Removing the Battery](#)).
3. Follow the instructions from [step 3](#) to [step 4](#) in [Removing the Optical Drive](#).
4. Remove the module cover (see [Removing the Module Cover](#)).
5. Remove the memory module(s) (see [Removing the Memory Module\(s\)](#)).
6. Remove the keyboard (see [Removing the Keyboard](#)).
7. Remove the palm rest (see [Removing the Palm Rest](#)).
8. Remove the display assembly (see [Removing the Display Assembly](#)).
9. Remove the middle cover (see [Removing the Middle Cover](#)).
10. Disconnect the I/O board cable from the connector on the system board.
11. Remove the three screws that secure the I/O board to the computer base.
12. Lift the I/O board out of the computer base.




|   |                           |   |            |
|---|---------------------------|---|------------|
| 1 | I/O board                 | 2 | screws (3) |
| 3 | I/O board cable connector |   |            |

---

## Replacing the I/O Board



1. Follow the instructions in [Before You Begin](#).
2. Align the screw holes on the I/O board with the screw holes on the computer base.
3. Replace the three screws that secure the I/O board to the computer base.
4. Connect the I/O board cable to the connector on the system board.
5. Replace the middle cover (see [Replacing the Middle Cover](#)).
6. Replace the display assembly (see [Replacing the Display Assembly](#)).
7. Replace the palm rest (see [Replacing the Palm Rest](#)).
8. Replace the keyboard (see [Replacing the Keyboard](#)).
9. Replace the memory module(s) (see [Replacing the Memory Module\(s\)](#)).
10. Replace the module cover (see [Replacing the Module Cover](#)).
11. Follow the instructions from [step 4](#) to [step 5](#) in [Replacing the Optical Drive](#).
12. Replace the battery (see [Replacing the Battery](#)).

 **CAUTION:** Before turning on the computer, replace all screws and ensure that no stray screws remain inside the computer. Failure to do so may result in damage to the computer.

---

[Back to Contents Page](#)

[Back to Contents Page](#)

## Keyboard

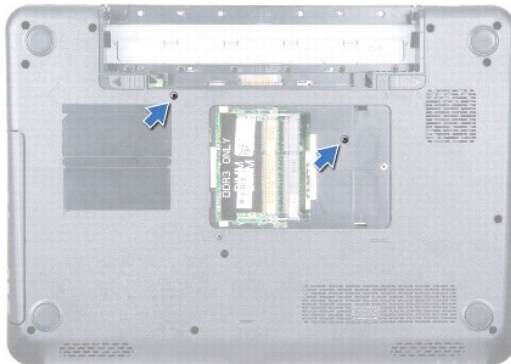
### Dell™ Inspiron™ N4010 Service Manual

- [Removing the Keyboard](#)
- [Replacing the Keyboard](#)

- WARNING:** Before working inside your computer, read the safety information that shipped with your computer. For additional safety best practices information, see the Regulatory Compliance Homepage at [www.dell.com/regulatory\\_compliance](http://www.dell.com/regulatory_compliance).
- CAUTION:** Only a certified service technician should perform repairs on your computer. Damage due to servicing that is not authorized by Dell™ is not covered by your warranty.
- CAUTION:** To avoid electrostatic discharge, ground yourself by using a wrist grounding strap or by periodically touching an unpainted metal surface (such as a connector on your computer).
- CAUTION:** To help prevent damage to the system board, remove the main battery (see [Removing the Battery](#)) before working inside the computer.
- 

## Removing the Keyboard

1. Follow the instructions in [Before You Begin](#).
2. Remove the battery (see [Removing the Battery](#)).
3. Remove the module cover (see [Removing the Module Cover](#)).
4. Remove the memory module(s) (see [Removing the Memory Module\(s\)](#)).
5. Remove the two screws that secure the keyboard to the computer base.



- CAUTION:** The keycaps on the keyboard are fragile, easily dislodged, and time-consuming to replace. Be careful when removing and handling the keyboard.

6. Turn the computer over and open the display as far as possible.
7. Slide the keyboard downwards to release the tabs on the palm rest that secure the keyboard.
8. Slide a plastic scribe between the keyboard and palm rest. Pry and lift the keyboard to disengage it from the tabs on the palm rest.



|   |                |   |          |
|---|----------------|---|----------|
| 1 | plastic scribe | 2 | keyboard |
|---|----------------|---|----------|

9. Ease the keyboard up until it clears off the palm rest.

**CAUTION:** Be extremely careful when removing and handling the keyboard. Failure to do so could result in scratching the display panel.

10. Without pulling hard on the keyboard, hold it towards the display.

11. Lift the connector latch that secures the keyboard cable to the connector on the system board and remove the keyboard cable.

12. Lift the keyboard off the computer.



|   |                      |   |                             |
|---|----------------------|---|-----------------------------|
| 1 | keyboard tabs<br>(5) | 2 | keyboard cable<br>connector |
|---|----------------------|---|-----------------------------|

## Replacing the Keyboard

1. Follow the instructions in [Before You Begin](#).

2. Slide the keyboard cable into the connector on the system board. Press down on the connector latch to secure the keyboard cable to the connector on the system board.

3. Slide the tabs on the keyboard into the slots on the palm rest.

4. Gently press around the edges of the keyboard and slide it upwards to secure the keyboard under the tabs on the palm rest.


5. Close the display and turn the computer over.

6. Replace the two screws that secure the keyboard to the computer base.

7. Replace the memory module(s) (see [Replacing the Memory Module\(s\)](#)).

8. Replace the module cover (see [Replacing the Module Cover](#)).

9. Replace the battery (see [Replacing the Battery](#)).

 **CAUTION:** Before turning on the computer, replace all screws and ensure that no stray screws remain inside the computer. Failure to do so may result in damage to the computer.

---

[Back to Contents Page](#)

[Back to Contents Page](#)

## Memory Module(s)

Dell™ Inspiron™ N4010 Service Manual

- [Removing the Memory Module\(s\)](#)
- [Replacing the Memory Module\(s\)](#)

**WARNING:** Before working inside your computer, read the safety information that shipped with your computer. For additional safety best practices information, see the Regulatory Compliance Homepage at [www.dell.com/regulatory\\_compliance](http://www.dell.com/regulatory_compliance).

**CAUTION:** Only a certified service technician should perform repairs on your computer. Damage due to servicing that is not authorized by Dell™ is not covered by your warranty.

**CAUTION:** To avoid electrostatic discharge, ground yourself by using a wrist grounding strap or by periodically touching an unpainted metal surface (such as a connector on your computer).

**CAUTION:** To help prevent damage to the system board, remove the main battery (see [Removing the Battery](#)) before working inside the computer.

You can increase your computer memory by installing memory modules on the system board. See "Specifications" in your *Setup Guide* for information on the type of memory supported by your computer.

**NOTE:** Memory modules purchased from Dell™ are covered under your computer warranty.

Your computer has two user-accessible SO-DIMM sockets, labeled DIMM A and DIMM B, that can be accessed from the bottom of the computer.

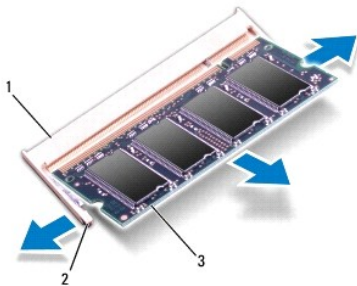
---

## Removing the Memory Module(s)

1. Follow the instructions in [Before You Begin](#).
2. Remove the battery (see [Removing the Battery](#)).
3. Remove the module cover (see [Removing the Module Cover](#)).

**CAUTION:** To prevent damage to the memory module connector, do not use tools to spread the memory module securing clips.

4. Use your fingertips to carefully spread apart the securing clips on each end of the memory-module connector until the module pops up.
5. Remove the memory module from the memory-module connector.



|   |                         |   |                    |
|---|-------------------------|---|--------------------|
| 1 | memory-module connector | 2 | securing clips (2) |
| 3 | memory module           |   |                    |


---

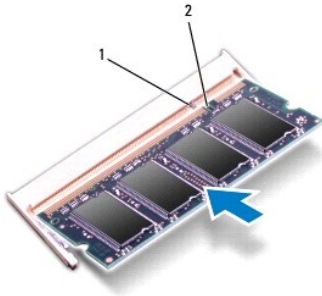
## Replacing the Memory Module(s)

**CAUTION:** If you need to install memory modules in two connectors, install a memory module in the connector labeled "DIMM A" before you install a memory module in the connector labeled "DIMM B."

1. Follow the instructions in [Before You Begin](#).


2. Align the notch in the memory module with the tab in the memory- module connector.
3. Slide the memory module firmly into the slot at a 45-degree angle, and press the memory module down until it clicks into place. If you do not hear the click, remove the memory module and reinstall it.

 **NOTE:** If the memory module is not installed properly, the computer may not boot.



|   |     |   |       |
|---|-----|---|-------|
| 1 | tab | 2 | notch |
|---|-----|---|-------|

4. Replace the module cover (see [Replacing the Module Cover](#)).
5. Replace the battery (see [Replacing the Battery](#)), or connect the AC adapter to your computer and an electrical outlet.

 **CAUTION:** Before turning on the computer, replace all screws and ensure that no stray screws remain inside the computer. Failure to do so may result in damage to the computer.

6. Turn on the computer.


As the computer boots, it detects the memory module(s) and automatically updates the system configuration information.

To confirm the amount of memory installed in the computer:

*Windows® Vista:*

Click **Start**  → **Help and Support** → **Dell System Information**.

*Windows® 7:*

Click **Start**  → **Control Panel** → **System and Security** → **System**.

---


[Back to Contents Page](#)


[Back to Contents Page](#)


## Wireless Mini-Card(s)


Dell™ Inspiron™ N4010 Service Manual


- [Removing the Mini-Card\(s\)](#)
- [Replacing the Mini-Card\(s\)](#)

 **WARNING:** Before working inside your computer, read the safety information that shipped with your computer. For additional safety best practices information, see the Regulatory Compliance Homepage at [www.dell.com/regulatory\\_compliance](http://www.dell.com/regulatory_compliance).

 **CAUTION:** Only a certified service technician should perform repairs on your computer. Damage due to servicing that is not authorized by Dell™ is not covered by your warranty.

 **CAUTION:** To avoid electrostatic discharge, ground yourself by using a wrist grounding strap or by periodically touching an unpainted metal surface (such as a connector on your computer).

 **CAUTION:** To help prevent damage to the system board, remove the main battery (see [Removing the Battery](#)) before working inside the computer.


 **CAUTION:** When the Mini-Card is not in the computer, store it in protective antistatic packaging (see "Protecting Against Electrostatic Discharge" in the safety instructions that shipped with your computer).

 **NOTE:** Dell does not guarantee compatibility or provide support for Mini-Cards from sources other than Dell.

If you ordered a wireless Mini-Card with your computer, the card is already installed.

Your computer supports:


- 1 One full Mini-Card slot — Mobile broadband or Wireless Wide Area Network (WWAN)
- 1 One half Mini-Card slot — Wireless Local Area Network (WLAN), Wi-Fi, or Worldwide Interoperability for Microwave Access (WiMax)

 **NOTE:** Depending on the configuration of the computer when it was sold, the Mini-Card slots may or may not have Mini-Cards installed in them.

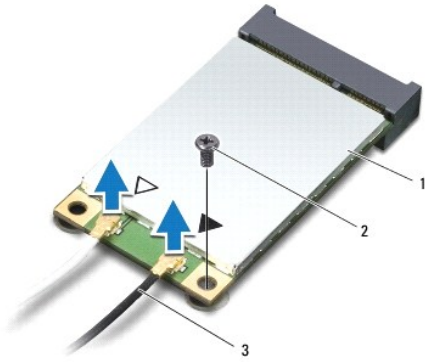
---

## Removing the Mini-Card(s)

1. Follow the instructions in [Before You Begin](#).
2. Remove the battery (see [Removing the Battery](#)).
3. Follow the instructions from [step 3](#) to [step 4](#) in [Removing the Optical Drive](#).
4. Remove the module cover (see [Removing the Module Cover](#)).
5. Remove the memory module(s) (see [Removing the Memory Module\(s\)](#)).
6. Remove the keyboard (see [Removing the Keyboard](#)).
7. Remove the palm rest (see [Removing the Palm Rest](#)).

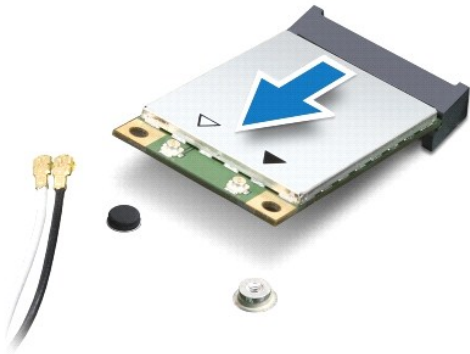
 **CAUTION:** When you disconnect a cable, pull on its connector or on its pull-tab, not on the cable itself. Some cables have connectors with locking tabs; if you are disconnecting this type of cable, press in on the locking tabs before you disconnect the cable. As you pull connectors apart, keep them evenly aligned to avoid bending any connector pins. Also, before you connect a cable, ensure that both connectors are correctly oriented and aligned.

8. Disconnect the antenna cables from the Mini-Card.



|   |           |   |       |   |                    |
|---|-----------|---|-------|---|--------------------|
| 1 | Mini-Card | 2 | screw | 3 | antenna cables (2) |
|---|-----------|---|-------|---|--------------------|

9. Remove the screw that secures the Mini-Card to the daughter board.
10. Lift the Mini-Card out of the connector on the daughter board.



## Replacing the Mini-Card(s)

1. Follow the instructions in [Before You Begin](#).
2. Remove the new Mini-Card from its packaging.

**CAUTION:** Use firm and even pressure to slide the card into place. If you use excessive force, you may damage the connector.

**CAUTION:** The connectors are keyed to ensure correct insertion. If you feel resistance, check the connectors on the card and on the system board, and realign the card.

**CAUTION:** To avoid damage to the Mini-Card, never place cables under the card.


3. Insert the Mini-Card connector at a 45-degree angle into the appropriate daughter board connector. For example, the WLAN card connector is labeled **WLAN** and so on.
4. Press the other end of the Mini-Card down into the slot on the daughter board and replace the screw that secures the Mini-Card to the daughter board connector.
5. Connect the appropriate antenna cables to the Mini-Card you are installing. The following table provides the antenna cable color scheme for each Mini-Card supported by your computer.

| Connectors on the Mini-Card | Antenna Cable Color Scheme |
|-----------------------------|----------------------------|
|-----------------------------|----------------------------|




|                                 |                        |
|---------------------------------|------------------------|
| <b>WWAN (2 antenna cables)</b>  |                        |
| Main WWAN (white triangle)      | white with gray stripe |
| Auxiliary WWAN (black triangle) | black with gray stripe |
| <b>WLAN (2 antenna cables)</b>  |                        |
| Main WLAN (white triangle)      | white                  |
| Auxiliary WLAN (black triangle) | black                  |

6. Secure the unused antenna cables in the protective mylar sleeve.
7. Replace the palm rest (see [Replacing the Palm Rest](#)).
8. Replace the keyboard (see [Replacing the Keyboard](#)).
9. Replace the memory module(s) (see [Replacing the Memory Module\(s\)](#)).
10. Replace the module cover (see [Replacing the Module Cover](#)).
11. Follow the instructions from [step 4](#) to [step 5](#) in [Replacing the Optical Drive](#).
12. Replace the battery (see [Replacing the Battery](#)).

 **CAUTION:** Before turning on the computer, replace all screws and ensure that no stray screws remain inside the computer. Failure to do so may result in damage to the computer.

13. Install the drivers and utilities for your computer, as required. For more information, see the *Dell Technology Guide*.

 **NOTE:** If you are installing a wireless Mini-Card from a source other than Dell, you must install the appropriate drivers and utilities. For more generic driver information, see the *Dell Technology Guide*.

---

[Back to Contents Page](#)

## Optical Drive

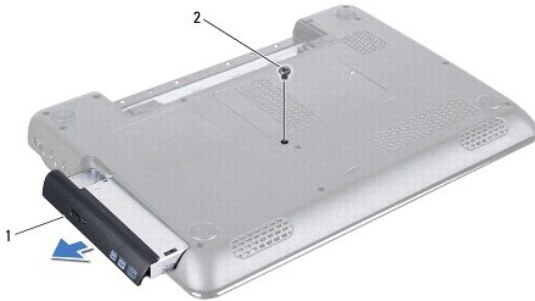
### Dell™ Inspiron™ N4010 Service Manual

- [Removing the Optical Drive](#)
- [Replacing the Optical Drive](#)

- WARNING:** Before working inside your computer, read the safety information that shipped with your computer. For additional safety best practices information, see the Regulatory Compliance Homepage at [www.dell.com/regulatory\\_compliance](http://www.dell.com/regulatory_compliance).
- CAUTION:** Only a certified service technician should perform repairs on your computer. Damage due to servicing that is not authorized by Dell™ is not covered by your warranty.
- CAUTION:** To avoid electrostatic discharge, ground yourself by using a wrist grounding strap or by periodically touching an unpainted metal surface (such as a connector on your computer).
- CAUTION:** To help prevent damage to the system board, remove the main battery (see [Removing the Battery](#)) before working inside the computer.
- 

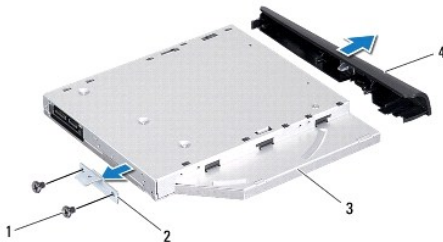
## Removing the Optical Drive

1. Follow the instructions in [Before You Begin](#).
2. Remove the battery (see [Removing the Battery](#)).
3. Remove the screw that secures the optical-drive assembly to the computer base.
4. Slide the optical-drive assembly out of the optical-drive compartment.



|   |                        |   |       |
|---|------------------------|---|-------|
| 1 | optical-drive assembly | 2 | screw |
|---|------------------------|---|-------|

5. Remove the two screws that secure the optical-drive bracket to the optical drive.
6. Pull the optical-drive bezel to detach it from the optical drive.




|   |               |   |                       |
|---|---------------|---|-----------------------|
| 1 | screws (2)    | 2 | optical-drive bracket |
| 3 | optical drive | 4 | optical-drive bezel   |

---

## Replacing the Optical Drive

1. Follow the instructions in [Before You Begin](#).
2. Align the tabs on the optical-drive bezel with the slots on the optical drive and snap the optical-drive bezel into place.
3. Align the screw holes on the optical-drive bracket with the screw holes on the optical drive and replace the two screws.
4. Slide the optical-drive assembly into the optical-drive compartment until it is fully seated.
5. Replace the screw that secures the optical-drive assembly to the computer base.
6. Replace the battery (see [Replacing the Battery](#)).

 **CAUTION:** Before turning on the computer, replace all screws and ensure that no stray screws remain inside the computer. Failure to do so may result in damage to the computer.

---

[Back to Contents Page](#)

[Back to Contents Page](#)

## Palm Rest

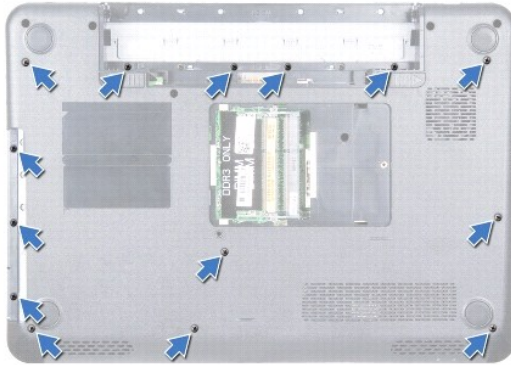
### Dell™ Inspiron™ N4010 Service Manual

- [Removing the Palm Rest](#)
- [Replacing the Palm Rest](#)

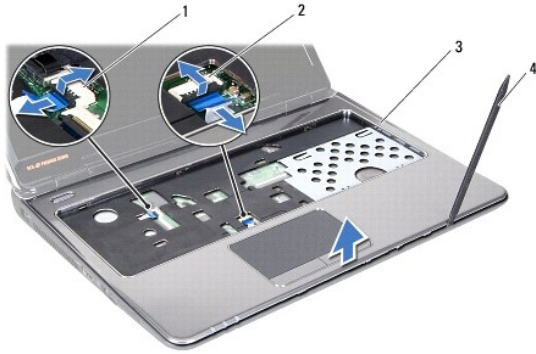
- WARNING:** Before working inside your computer, read the safety information that shipped with your computer. For additional safety best practices information, see the Regulatory Compliance Homepage at [www.dell.com/regulatory\\_compliance](http://www.dell.com/regulatory_compliance).
- CAUTION:** Only a certified service technician should perform repairs on your computer. Damage due to servicing that is not authorized by Dell™ is not covered by your warranty.
- CAUTION:** To avoid electrostatic discharge, ground yourself by using a wrist grounding strap or by periodically touching an unpainted metal surface (such as a connector on your computer).
- CAUTION:** To help prevent damage to the system board, remove the main battery (see [Removing the Battery](#)) before working inside the computer.
- 

## Removing the Palm Rest

1. Follow the instructions in [Before You Begin](#).
2. Remove the battery (see [Removing the Battery](#)).
3. Follow the instructions from [step 3](#) to [step 4](#) in [Removing the Optical Drive](#).
4. Remove the module cover (see [Removing the Module Cover](#)).
5. Remove the memory module(s) (see [Removing the Memory Module\(s\)](#)).
6. Remove the fourteen screws that secure the palm rest to the computer base.



7. Remove the keyboard (see [Removing the Keyboard](#)).
- CAUTION:** Pull on the plastic tab on top of the connectors to avoid damaging the connectors.
8. Disconnect the touch pad cable and the power button cable from the connectors on the system board.
- CAUTION:** Carefully separate the palm rest from the computer base to avoid damage to the palm rest.
9. Slide a plastic scribe between the computer base and the palm rest. Pry and lift the palm rest off the computer base.



|   |                              |   |                           |
|---|------------------------------|---|---------------------------|
| 1 | power button cable connector | 2 | touch pad cable connector |
| 3 | palm rest                    | 4 | plastic scribe            |

---

## Replacing the Palm Rest

1. Follow the instructions in [Before You Begin](#).
2. Slide the tabs on the palm rest into the slots on the middle cover and gently snap the palm rest into place.
3. Connect the touch pad cable and the power button cable to the connectors on the system board.
4. Replace the keyboard (see [Replacing the Keyboard](#)).
5. Replace the fourteen screws that secure the palm rest to the computer base.
6. Replace the memory module(s) (see [Replacing the Memory Module\(s\)](#)).
7. Replace the module cover (see [Replacing the Module Cover](#)).
8. Follow the instructions from [step 4](#) to [step 5](#) in [Replacing the Optical Drive](#).
9. Replace the battery (see [Replacing the Battery](#)).

 **CAUTION:** Before turning on the computer, replace all screws and ensure that no stray screws remain inside the computer. Failure to do so may result in damage to the computer.

---

[Back to Contents Page](#)

[Back to Contents Page](#)

## Power Button Board

Dell™ Inspiron™ N4010 Service Manual

- [Removing the Power Button Board](#)
- [Replacing the Power Button Board](#)

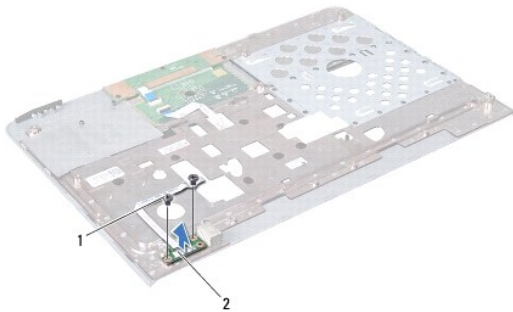
- WARNING:** Before working inside your computer, read the safety information that shipped with your computer. For additional safety best practices information, see the Regulatory Compliance Homepage at [www.dell.com/regulatory\\_compliance](http://www.dell.com/regulatory_compliance).
- CAUTION:** Only a certified service technician should perform repairs on your computer. Damage due to servicing that is not authorized by Dell™ is not covered by your warranty.
- CAUTION:** To avoid electrostatic discharge, ground yourself by using a wrist grounding strap or by periodically touching an unpainted metal surface (such as a connector on your computer).
- CAUTION:** To help prevent damage to the system board, remove the main battery (see [Removing the Battery](#)) before working inside the computer.
- 

### Removing the Power Button Board

1. Follow the instructions in [Before You Begin](#).
2. Remove the battery (see [Removing the Battery](#)).
3. Follow the instructions from [step 3](#) to [step 4](#) in [Removing the Optical Drive](#).
4. Remove the module cover (see [Removing the Module Cover](#)).
5. Remove the memory module(s) (see [Removing the Memory Module\(s\)](#)).
6. Remove the keyboard (see [Removing the Keyboard](#)).
7. Remove the palm rest (see [Removing the Palm Rest](#)).
8. Turn the palm rest over.
9. Remove the two screws that secure the power button board to the palm rest.

**NOTE:** The power button board cable is affixed to the palm rest.

10. Carefully release the power button board cable from the palm rest.




|   |            |   |                    |
|---|------------|---|--------------------|
| 1 | screws (2) | 2 | power button board |
|---|------------|---|--------------------|

---

### Replacing the Power Button Board

1. Follow the instructions in [Before You Begin](#).

2. Align the screw holes on the power button board with the screw holes on the palm rest and replace the two screws.
3. Adhere the power button board cable on the palm rest.
4. Turn the palm rest over.
5. Replace the palm rest (see [Replacing the Palm Rest](#)).
6. Replace the keyboard (see [Replacing the Keyboard](#)).
7. Replace the memory module(s) (see [Replacing the Memory Module\(s\)](#)).
8. Replace the module cover (see [Replacing the Module Cover](#)).
9. Follow the instructions from [step 4](#) to [step 5](#) in [Replacing the Optical Drive](#).
10. Replace the battery (see [Replacing the Battery](#)).

 **CAUTION:** Before turning on the computer, replace all screws and ensure that no stray screws remain inside the computer. Failure to do so may result in damage to the computer.

---

[Back to Contents Page](#)

## Battery

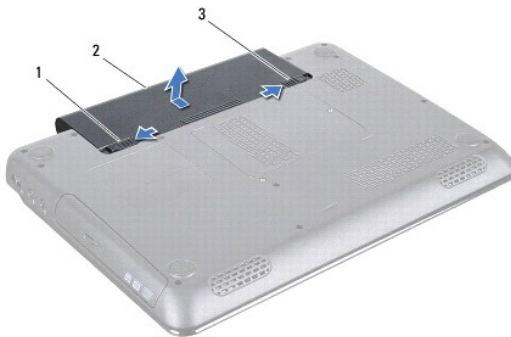
### Dell™ Inspiron™ N4010 Service Manual

- [Removing the Battery](#)
- [Replacing the Battery](#)

- WARNING:** Before working inside your computer, read the safety information that shipped with your computer. For additional safety best practices information, see the Regulatory Compliance Homepage at [www.dell.com/regulatory\\_compliance](http://www.dell.com/regulatory_compliance).
- CAUTION:** Only a certified service technician should perform repairs on your computer. Damage due to servicing that is not authorized by Dell™ is not covered by your warranty.
- CAUTION:** To avoid electrostatic discharge, ground yourself by using a wrist grounding strap or by periodically touching an unpainted metal surface (such as a connector on your computer).
- CAUTION:** To avoid damage to the computer, use only the battery designed for this particular Dell computer. Do not use batteries designed for other Dell computers.
- 

## Removing the Battery

1. Follow the instructions in [Before You Begin](#).
2. Shut down the computer and turn it over.
3. Slide the battery lock latch until it clicks into place.
4. Slide the battery release latch to the unlock position.
5. Slide and lift the battery out of the battery bay.



|   |                       |   |         |   |                    |
|---|-----------------------|---|---------|---|--------------------|
| 1 | battery release latch | 2 | battery | 3 | battery lock latch |
|---|-----------------------|---|---------|---|--------------------|

---

## Replacing the Battery

1. Follow the instructions in [Before You Begin](#).
  2. Align the tabs on the battery with the slots on the battery bay.
  3. Slide the battery into the battery bay until it clicks into place.
  4. Slide the battery lock latch to the lock position.
-



## Speakers

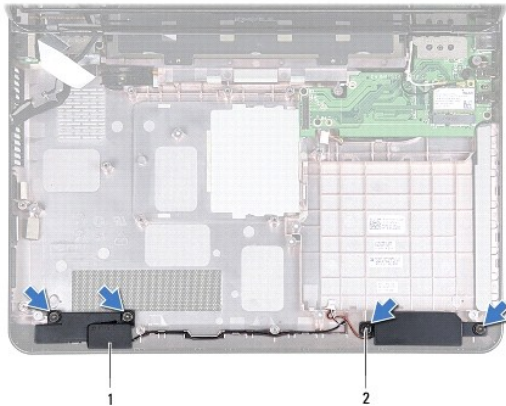
### Dell™ Inspiron™ N4010 Service Manual

- [Removing the Speakers](#)
- [Replacing the Speakers](#)

- WARNING:** Before working inside your computer, read the safety information that shipped with your computer. For additional safety best practices information, see the Regulatory Compliance Homepage at [www.dell.com/regulatory\\_compliance](http://www.dell.com/regulatory_compliance).
- CAUTION:** Only a certified service technician should perform repairs on your computer. Damage due to servicing that is not authorized by Dell™ is not covered by your warranty.
- CAUTION:** To avoid electrostatic discharge, ground yourself by using a wrist grounding strap or by periodically touching an unpainted metal surface (such as a connector on your computer).
- CAUTION:** To help prevent damage to the system board, remove the main battery (see [Removing the Battery](#)) before working inside the computer.
- 

## Removing the Speakers

1. Follow the instructions in [Before You Begin](#).
2. Follow the instructions from [step 2](#) to [step 15](#) in [Removing the System Board](#).
3. Remove the four screws (two on each speaker) that secure the speakers to the computer base.
4. Make a note of the speakers cable routing and lift the speakers along with the cable, off the computer base.



|   |              |   |            |
|---|--------------|---|------------|
| 1 | speakers (2) | 2 | screws (4) |
|---|--------------|---|------------|

---

## Replacing the Speakers


1. Follow the instructions in [Before You Begin](#).
  2. Place the speakers on the computer base and route the speakers cable.
  3. Replace the four screws that secure the speakers to the computer base.
  4. Follow the instructions from [step 6](#) to [step 20](#) in [Replacing the System Board](#).
- CAUTION:** Before turning on the computer, replace all screws and ensure that no stray screws remain inside the computer. Failure to do so may result in damage to the computer.
-




## System Board


### Dell™ Inspiron™ N4010 Service Manual

- [Removing the System Board](#)
- [Replacing the System Board](#)
- [Entering the Service Tag in the BIOS](#)

 **WARNING:** Before working inside your computer, read the safety information that shipped with your computer. For additional safety best practices information, see the Regulatory Compliance Homepage at [www.dell.com/regulatory\\_compliance](http://www.dell.com/regulatory_compliance).

 **CAUTION:** Only a certified service technician should perform repairs on your computer. Damage due to servicing that is not authorized by Dell™ is not covered by your warranty.

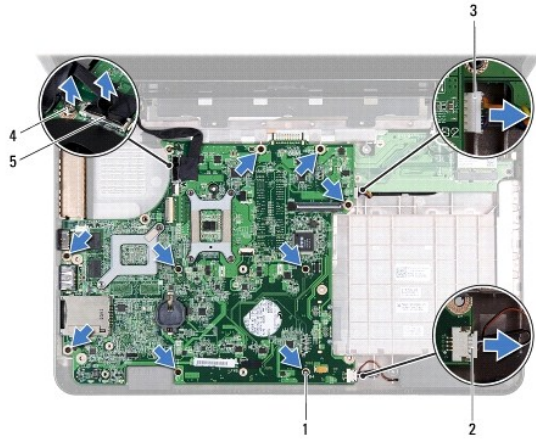
 **CAUTION:** To avoid electrostatic discharge, ground yourself by using a wrist grounding strap or by periodically touching an unpainted metal surface (such as a connector on your computer).

 **CAUTION:** To help prevent damage to the system board, remove the main battery (see [Removing the Battery](#)) before working inside the computer.

---

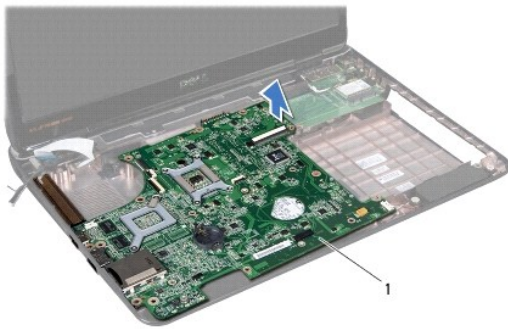
## Removing the System Board

1. Follow the instructions in [Before You Begin](#).
2. Press and eject any installed cards or blanks from the 7-in-1 media card reader.
3. Remove the battery (see [Removing the Battery](#)).
4. Follow the instructions from [step 3](#) to [step 4](#) in [Removing the Optical Drive](#).
5. Remove the module cover (see [Removing the Module Cover](#)).
6. Remove the memory module(s) (see [Removing the Memory Module\(s\)](#)).
7. Remove the keyboard (see [Removing the Keyboard](#)).
8. Remove the palm rest (see [Removing the Palm Rest](#)).
9. Remove the coin-cell battery (see [Removing the Coin-Cell Battery](#)).
10. Remove the thermal fan (see [Removing the Thermal Fan](#)).
11. Remove the Bluetooth card (see [Removing the Bluetooth Card](#)).
12. Disconnect the AC adapter cable and the speakers cable from the connectors on the system board.
13. Disconnect the display cable from the connector on the system board, and remove the display cable grounding screw.
14. Remove the nine screws that secure the system board assembly to the computer base.



|   |                            |   |                               |
|---|----------------------------|---|-------------------------------|
| 1 | screws (9)                 | 2 | speakers cable connector      |
| 3 | AC adapter cable connector | 4 | display cable grounding screw |
| 5 | display cable              |   |                               |

15. Lift the system board assembly to disconnect the connector on the system board from the connector on the daughter board.




|   |              |
|---|--------------|
| 1 | system board |
|---|--------------|

16. Turn the system board assembly over.
17. Follow the instructions from [step 3](#) to [step 5](#) in [Removing the Hard Drive](#).
18. Remove the thermal cooling assembly (see [Removing the Thermal Cooling Assembly](#)).
19. Remove the processor module (see [Removing the Processor Module](#)).

## Replacing the System Board

1. Follow the instructions in [Before You Begin](#).
2. Replace the processor module (see [Replacing the Processor Module](#)).
3. Replace the thermal cooling assembly (see [Replacing the Thermal Cooling Assembly](#)).
4. Follow the instructions from [step 4](#) to [step 5](#) in [Replacing the Hard Drive](#).
5. Turn the system board assembly over.
6. Align the connectors on the system board with the slots on the computer base.
7. Gently press the system board to connect the connector on the system board to the connector on the daughter board.

8. Replace the nine screws that secure the system board assembly to the computer base.
9. Connect the display cable to the connector on the system board, and replace the display cable grounding screw.
10. Connect the AC adapter cable and the speakers cable to the connectors on the system board.
11. Replace the Bluetooth card (see [Replacing the Bluetooth Card](#)).
12. Replace the thermal fan (see [Replacing the Thermal Fan](#)).
13. Replace the coin-cell battery (see [Replacing the Coin-Cell Battery](#)).
14. Replace the palm rest (see [Replacing the Palm Rest](#)).
15. Replace the keyboard (see [Replacing the Keyboard](#)).
16. Replace the memory module(s) (see [Replacing the Memory Module\(s\)](#)).
17. Replace the module cover (see [Replacing the Module Cover](#)).
18. Follow the instructions from [step 4](#) to [step 5](#) in [Replacing the Optical Drive](#).
19. Replace the battery (see [Replacing the Battery](#)).
20. Replace any removed cards or blanks in the 7-in-1 media card reader.

 **CAUTION:** Before turning on the computer, replace all screws and ensure that no stray screws remain inside the computer. Failure to do so may result in damage to the computer.

21. Turn on the computer.

 **NOTE:** After you have replaced the system board, enter the computer Service Tag in the BIOS of the replacement system board.

22. Enter the service tag (see [Entering the Service Tag in the BIOS](#)).

---

## Entering the Service Tag in the BIOS

1. Ensure that the AC adapter is plugged in and that the main battery is installed properly.
2. Turn on the computer.
3. Press <F2> during POST to enter the system setup program.
4. Navigate to the security tab and enter the service tag in the **Set Service Tag** field.

---

[Back to Contents Page](#)